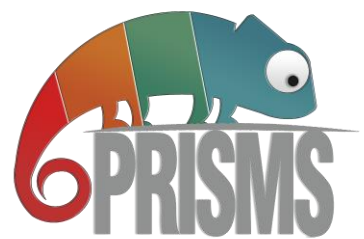




**McDonald's
St. Julian's**

Social Story
for Autistic visitors



ENTRANCE

This McDonald's is found in St. George's Road, St Julian's opposite the LOVE monument. This is the entrance to the McDonald's restaurant.



Once you enter the restaurant, you will be in the main lobby area.



MAIN LOBBY

On the left-hand side, you will see a McCafé, from where you can buy teas, smoothies, coffees, cakes and some savoury snacks.



Straight ahead you will find our front counter.



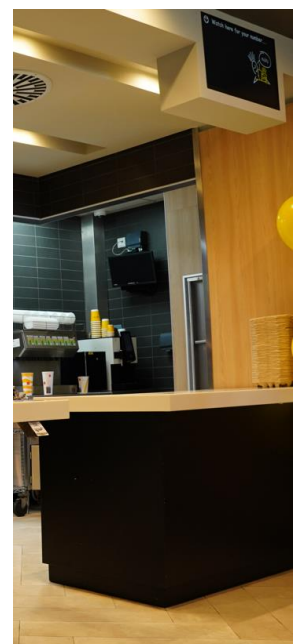
FRONT COUNTER

At the front counter you can order your food, pick-up the food and ask for general assistance.

You can also ask for our Autism Ambassadors.



You can order here



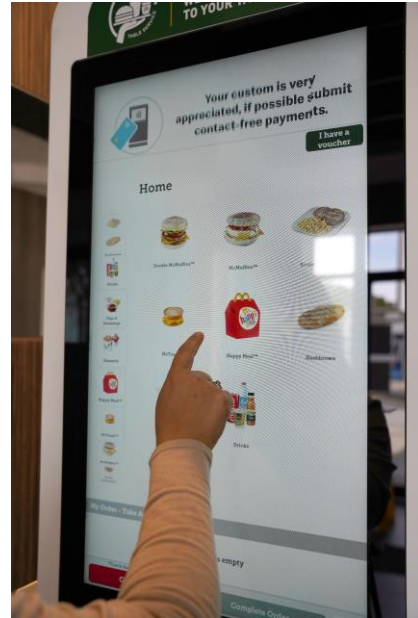
Pick up your food here

SELF-ORDERING KIOSK

In the main lobby area and upstairs, you will find various self-ordering kiosks.



This is a Self-Ordering Kiosk.



You can use the Self-Ordering Kiosk to order your food.

TABLE SERVICE



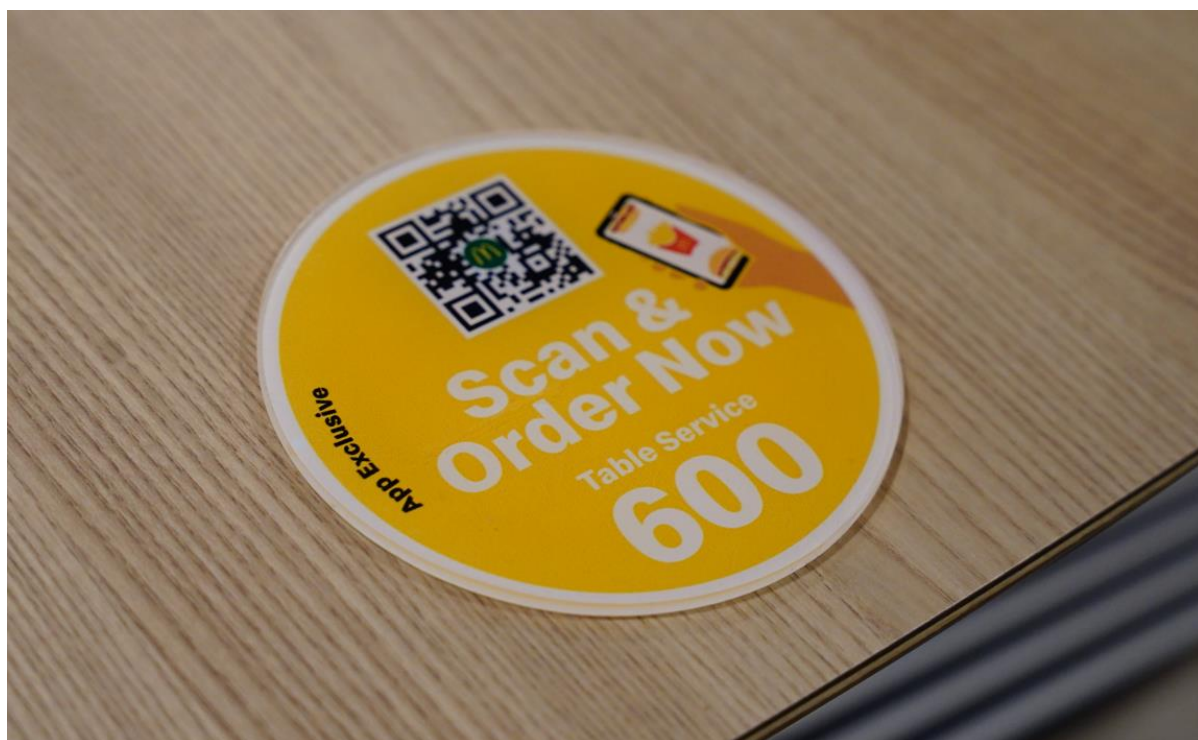
You can choose Table Service to have your order delivered to your table. Table service can be chosen from the Front counter or from the Self-Ordering kiosk.

Simply take the table tent show in this picture with the number 3, to the table and our colleagues will bring your order to your table.

The table tent could be any number.



MOBILE ORDER & PAY



You can also choose to order from your own mobile on the McDonald's App.

On each table you will find the QR code which you can scan to gain access to the mobile app. Once on the app you can place your order, input the table number as seen in the picture above, and one of our colleagues will bring your order directly to your table.

For more information on how to order using the Mobile Order & Pay, you can watch our tutorial video on this link:

<https://www.mcdonalds.com.mt/mobile-order-pay/>

Note that the number on your table could be different than the number in the picture.

GOING UPSTAIRS

On the left-hand side between the McCafé and the Front Counter you will see the stairs that will lead you to the first floor.



On the first floor you will find more seating space, the Quiet Space, Toilets and the terrace.

THE FIRST FLOOR



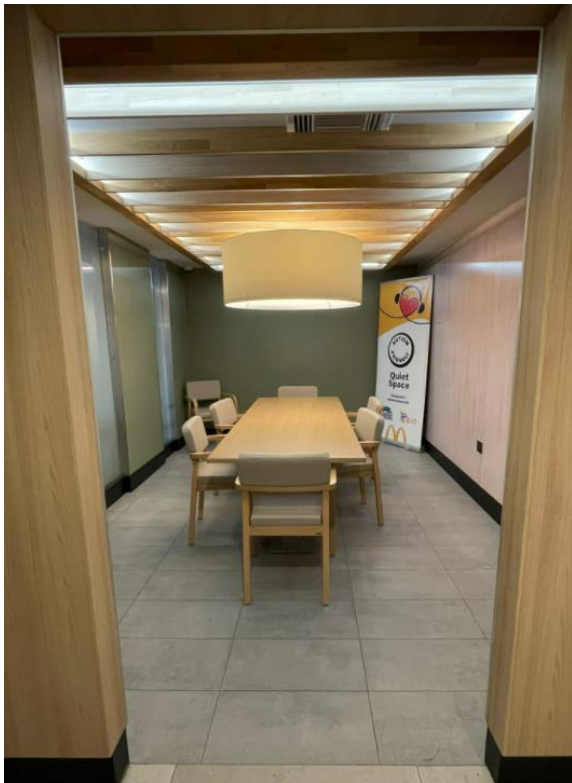
In the corridor opposite the stairs, you will find the Quiet Space which is the first door on your left and the second door on your left will lead you to the toilets.

QUIET SPACE



The first door along the corridor is the Quiet Space. This is the entrance to the Quiet Space.

This is what the Quiet Space looks like. There is one big table and several chairs where you can sit and enjoy your McDonald's.

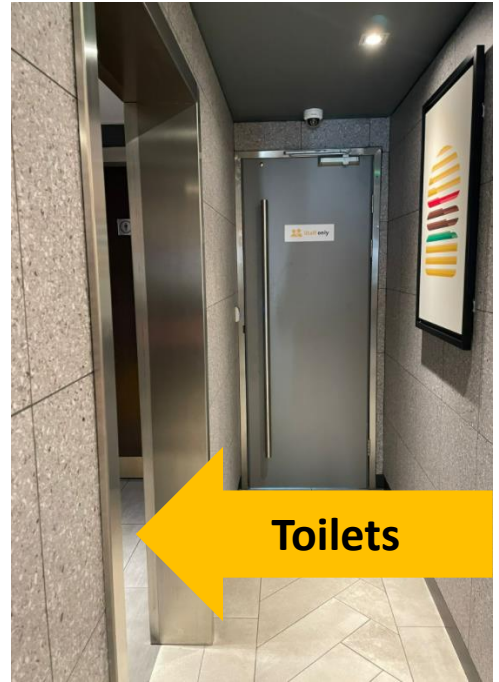


Ask our Autism Ambassadors, for anything you might need including sensory toys and noise cancelling headphones.

TOILETS

The second door along the corridor is where you will find the toilets.

Once here, you will find the Men's toilet on the right and Women's toilet on the left.

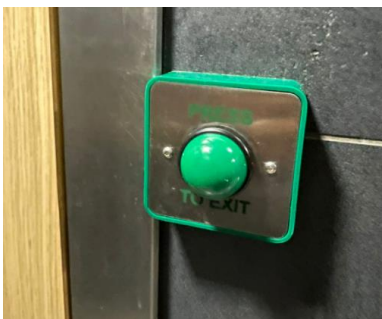


Men's Toilet



Women's Toilet

If the door to the toilets is closed, you will need to input the access code on the keypad to open the door. The code can be found on your receipt.



If the door is closed when exiting the toilet, press this green exit button to open the door.

TERRACE

On the first floor you will also find a terrace from where you can enjoy the view of St Julian's.



Autism Friendly Hours

Mondays and Thursdays between 15:00 and 16:30, at McDonald's St Julian's we have Autism Friendly Hours, during which the entire restaurant will have dimmer lights and lower noise levels.

Autism Ambassadors

Our Autism Ambassadors are easily identifiable from the Autism Friendly badge they will be wearing on their uniform.



Thank you!

Thank you for visiting our restaurant. We hope you enjoy your experience here.